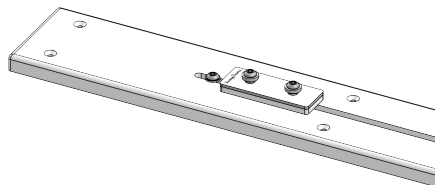
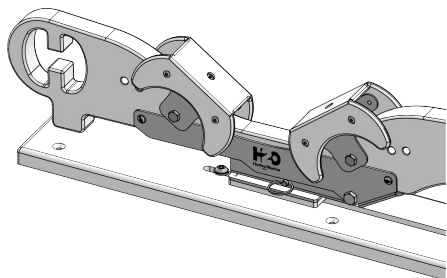




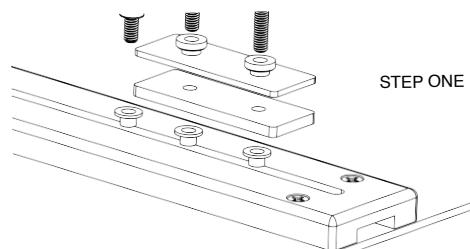
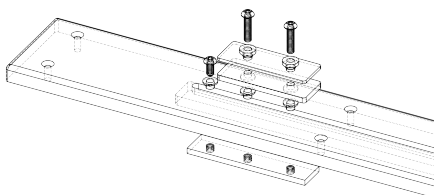
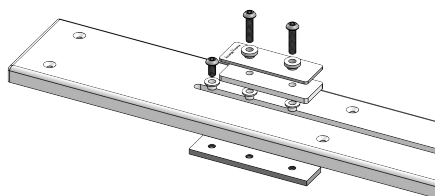
Hurley Rails / Channels

MOUNTING: It is suggested to use 1/4"-20 stainless steel Flat Head Bolts (not included) or larger if needed for the Starboard Rails/Channel. The bolt length should equal the thickness of your platform plus 1"+. The enclosed end of the Rail/Channel is usually mounted toward the end of the platform facing the water for safety purposes. Each Rail / Channel should not be mounted any closer than 36" and not any farther than 60" apart. Generously apply 3M 5200 or 4200 sealant to seal drilled holes and the bottom of the Rail / Channel. Secure fasteners using fender washers or backing plates, when applicable, and nyloc nuts.

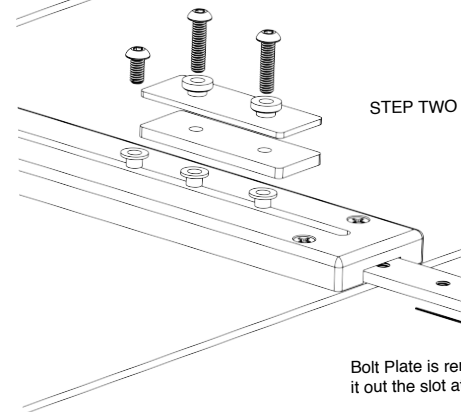




Caution:
Be sure to use Loctite to secure
nuts and/or bolts.



STEP ONE



STEP TWO

Bolt Plate is removed by sliding
it out the slot at the end of the Rail